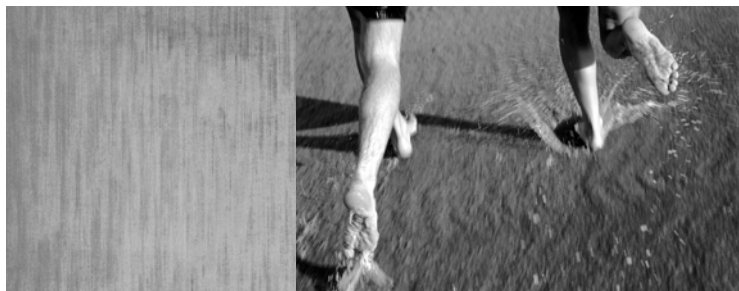


Your ID card

what you need to know



The Principal Financial Group® (The Principal®) provides you with an ID card that contains health care benefit information specific to you and your dependents. You may find the following ID card information helpful.

- It's best to carry your ID card with you at all times – you never know when you might need it. Any time you receive a new card, make sure your providers have copies of the updated version.
- Have a benefit question? Refer to the toll-free number printed on your card. Your card also provides an address for claims submission.
- Your plan may require pre-authorization for a hospital stay or surgical procedure. If so, the toll-free number to call to obtain pre-authorization is printed on your card.
- If you have a prescription drug card program, your prescription drug information is either included on your health care benefit ID card or a separate card. Either way, you'll need to show the appropriate card at your pharmacy.
- If you have single coverage, you'll receive one card. If you have family coverage, you'll receive two cards.
- Contact The Principal if you lose your card. We'll get you a new one.